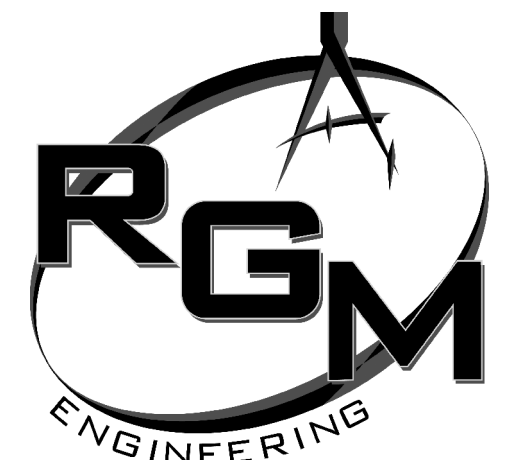
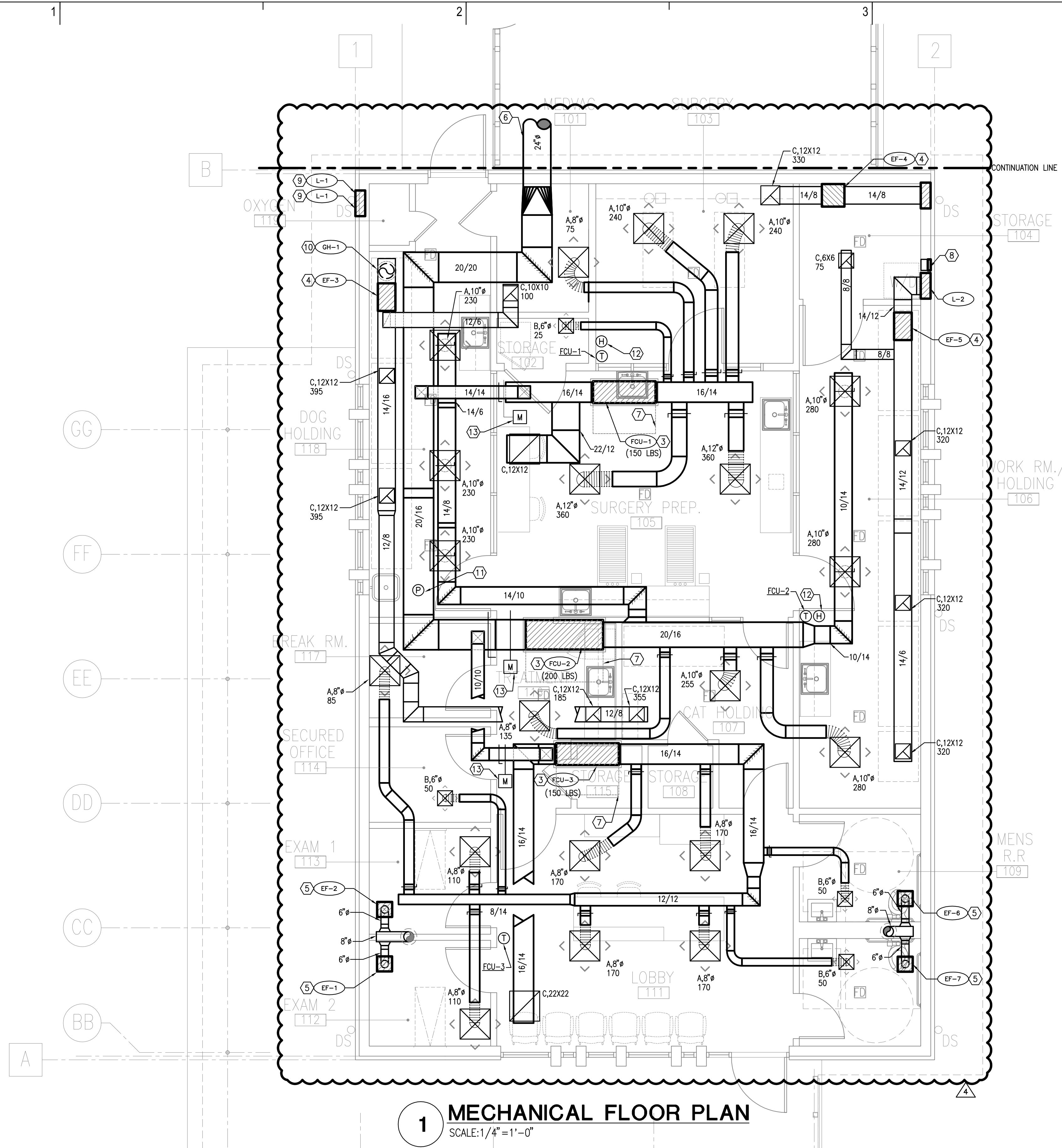


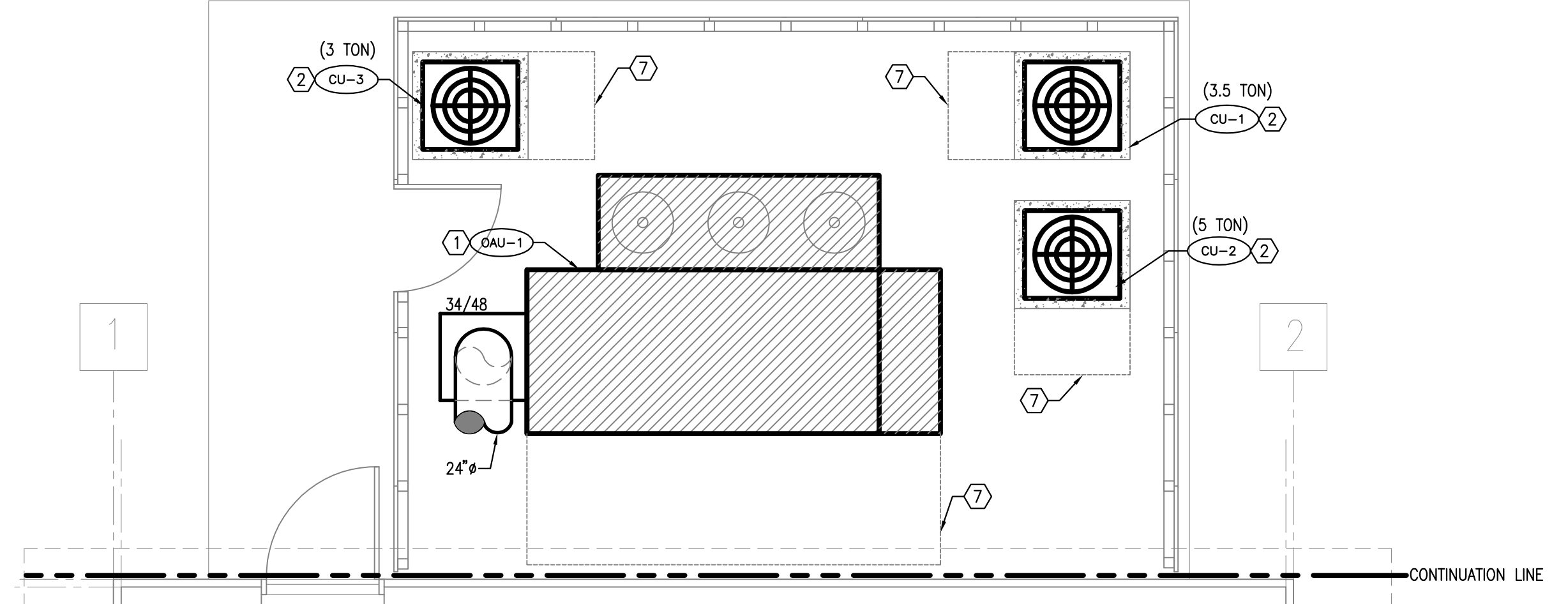
CAD	P	HN
E	MC	HN
M	TP	HN
PM	RCM	HN



TEXAS REGISTERED
ENGINEERING FIRM P-10487
700 N. ST. MARY'S
SUITE 1225
SAN ANTONIO, TX 78205
WWW.RGMENGINEERING.NET
PHONE: 210.299.4522
FAX: 210.299.4525



1 MECHANICAL FLOOR PLAN
SCALE: 1/4" = 1'-0"



2 MECHANICAL EQUIPMENT
SCALE: 1/4" = 1'-0"

MECHANICAL KEYED NOTES:

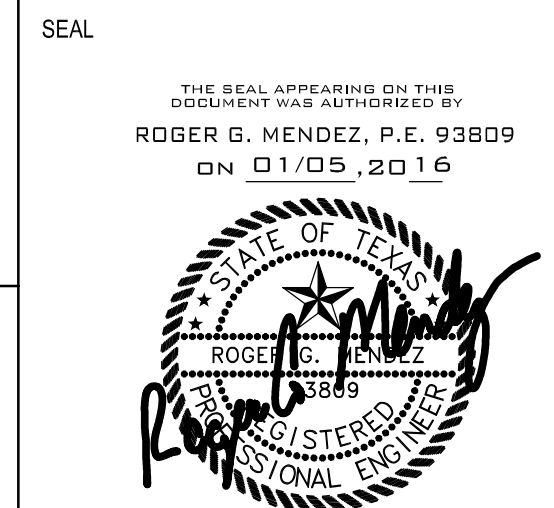
- ① OUTSIDE AIR UNIT, REFER TO SCHEDULE AND DETAIL. MOUNT ON 4" CONCRETE PAD, 3/4" COPPER CONDENSATE TO HUB DRAIN.
- ② CONDENSING UNIT, REFER TO SCHEDULE AND DETAIL. ROUTE REFRIGERANT LINES BELOW GRADE IN PVC PIPE.
- ③ FAN AND COIL UNIT, REFER TO SCHEDULE AND DETAIL. PROVIDE SERVICE SPACE ABOVE CEILING. ROUTE 3/4" CONDENSATE TO JAN. SINK. COORDINATE UNIT PLACEMENT WITH STRUCTURAL JOIST FOR UNIT SERVICE AND REMOVAL.
- ④ EXHAUST FAN, REFER TO SCHEDULE AND DETAIL. PROVIDE SERVICE SPACE ABOVE CEILING AND WALL CAP.
- ⑤ EXHAUST FAN, REFER TO SCHEDULE AND DETAIL. CONNECT TO EXHAUST DUCT AND ROOF CAP AS INDICATED.
- ⑥ SPIRAL DUCT WITH INTERNAL INSULATION.
- ⑦ UNIT SERVICE SPACE.
- ⑧ 6" DOMESTIC DRYER VENT WITH WALL CAP FROM RESIDENTIAL TYPE DRYER. 6' EQUIVALENT FEET TOTAL. MOUNT AS HIGH AS POSSIBLE.
- ⑨ INSTALL WALL LOUVER HIGH AND LOW.
- ⑩ GRAVITY HOOD ON ROOF REFER TO SCHEDULE.
- ⑪ DUCT MOUNTED STATIC PRESSURIZATION SENSOR. SENSOR WILL MODULATE OAH-1 BASE ON SET POINT.
- ⑫ THERMOSTAT AND HUMIDISTAT MOUNTED AT ADA HEIGHT.
- ⑬ CONNECT MODULATING DAMPER TO FCU. DAMPER WILL OPEN WHEN FAN IS ENERGIZED.

FILE NAME: 15-120 M1.01 Mechanical Floor Plan.dwg
FILE LOCATION: N:\2015\15-120 Spay & Neuter Clinic San Antonio\Mechanical
DATE: Wed, 06 Jan 2016 - 1:06pm
PLOTTER: Joseph

ARCHITECT
DOUGLAS ARCHITECTS
1320 E. Houston St. Suite 102
San Antonio, TX 78205
T: 210.226.5500
F: 210.226.5501
www.douglasarchitects.net
Project No.: 1414
Project Architect: Andrew Douglas, AIA
Project Manager: Caleb Gains

OWNER
BROOKS CITY BASE
Contact: Jaime Lawhn
3201 Sidney Brooks
San Antonio, TX 78235
T: 210.678.3357
E: jaime.lawhn@brookscity-base.com
STRUCTURAL ENGINEER
LUNDY & FRANKE ENGINEERING, INC.
Contact: Duncan McAda
549 Helmer Rd.
San Antonio, TX 78232
T: 210.379.7900
E: mcada@lundyfranke.com

M.E.P. ENGINEER
R.G.M. ENGINEERING
Contact: Roger Mendez
700 N. St. Mary's, Suite 1225
San Antonio, TX 78205
T: 210.299.4522
E: roger@rgmengineering.net



DATE	ISSUANCE
1	October 19, 2015 50% Progress Set
2	December 04, 2015 90% Progress Set
3	December 11, 2015 100% CD Set
4	December 15, 2015 Addendum 1
5	December 16, 2015 Addendum 2
6	December 22, 2015 Addendum 3
7	January 05, 2016 Addendum 4

PROJECT
VETERINARY CLINIC AT BROOKS
ADDENDUM 4
JANUARY 05, 2016
SHEET NUMBER
M1.01