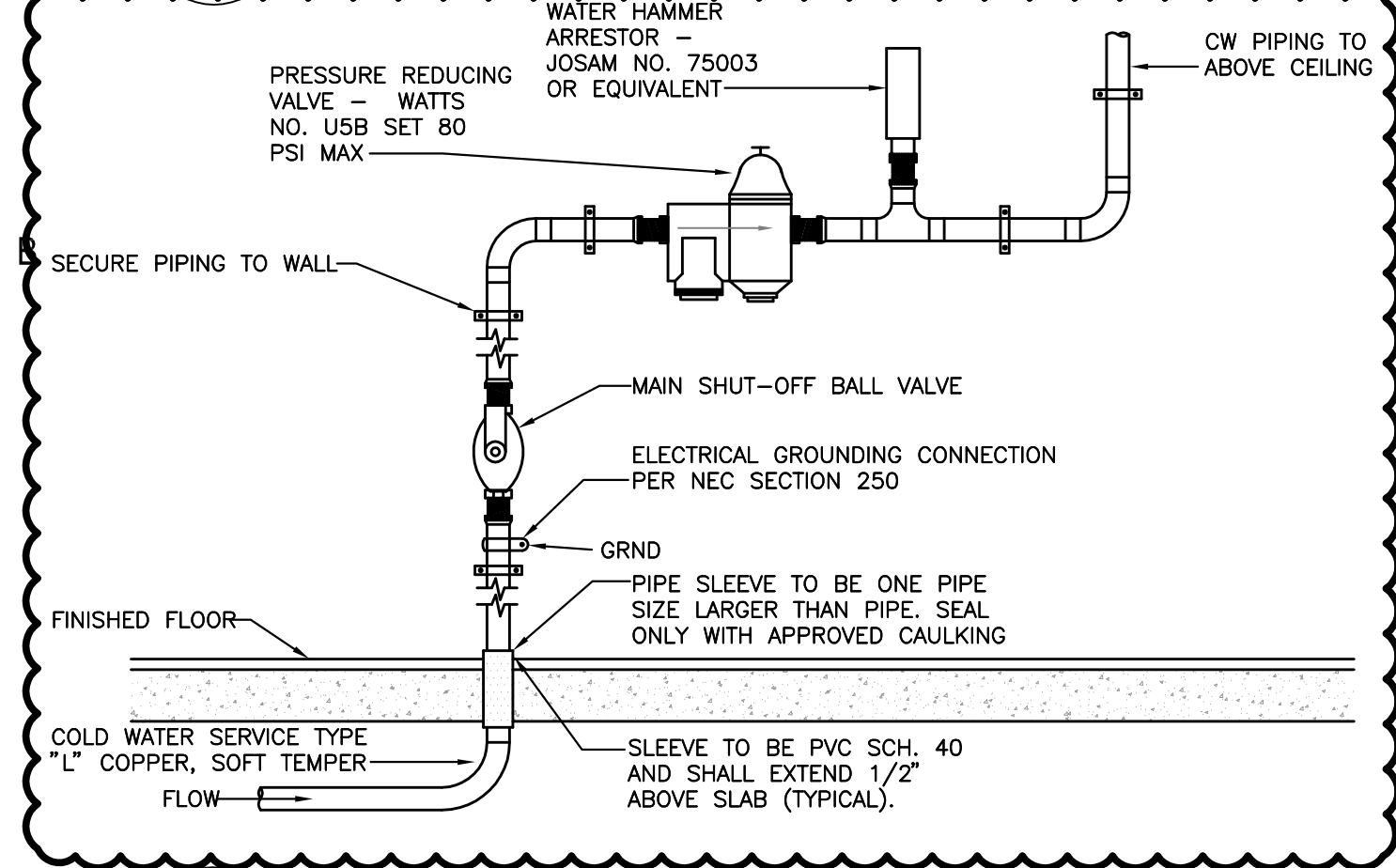
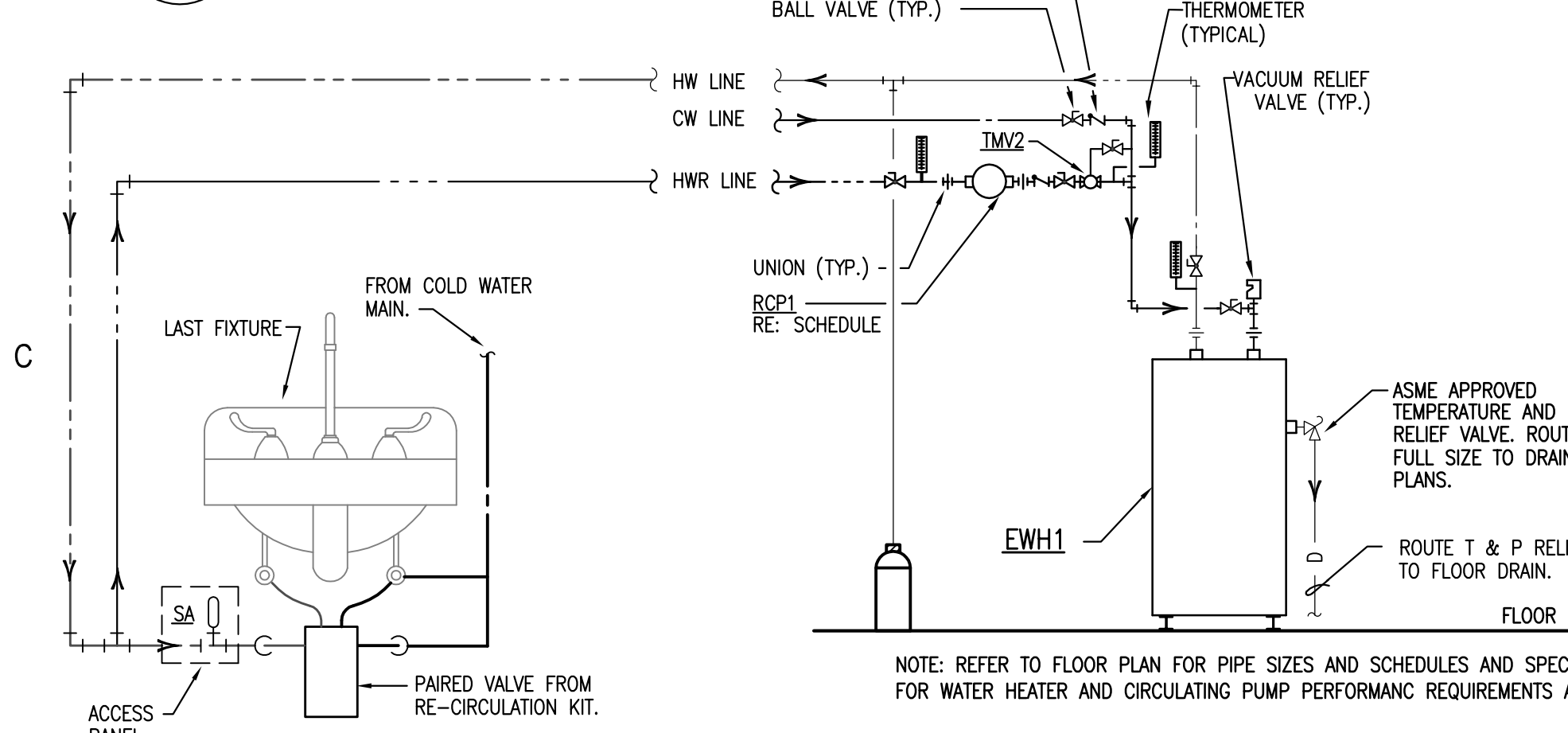


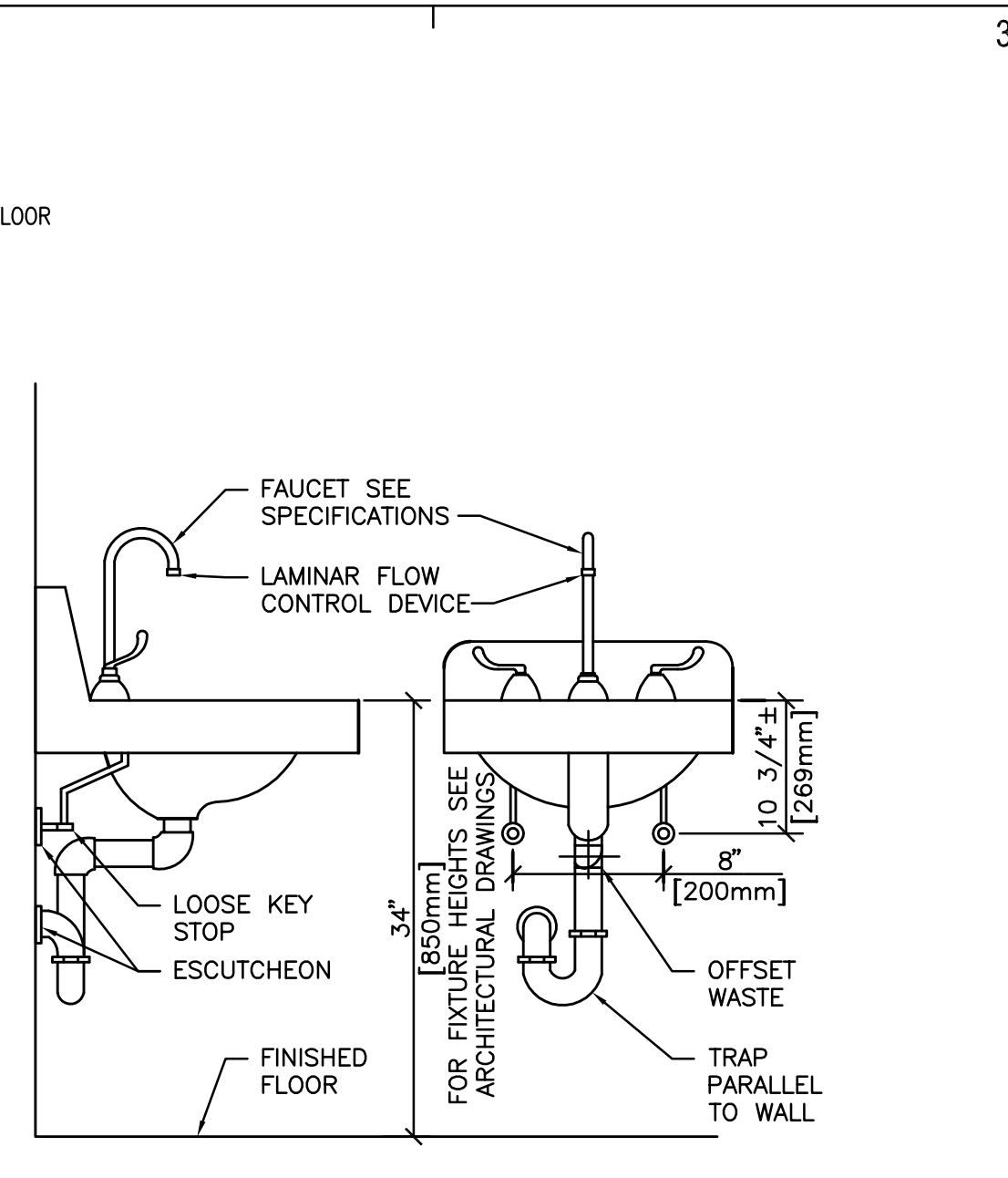
**1 TYPICAL TRAP PRIMER DETAIL**  
SCALE: NOT TO SCALE



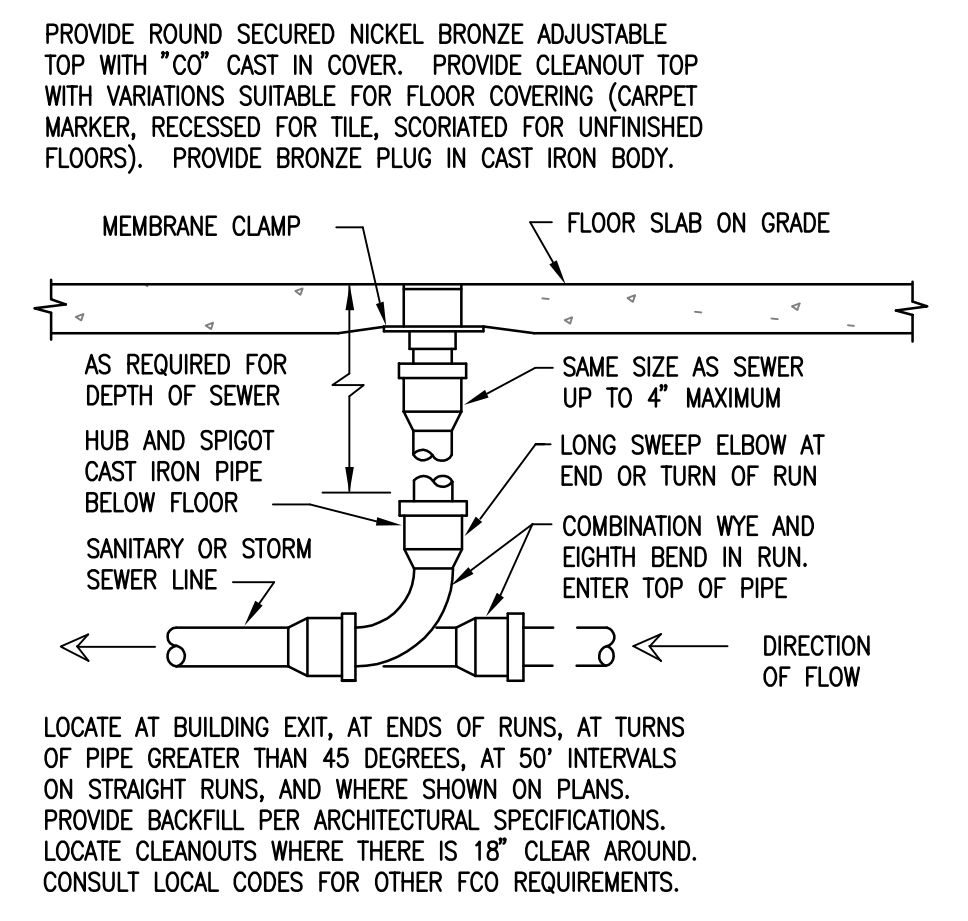
**5 WATER PIPE ENTRY DETAIL**  
SCALE: NOT TO SCALE



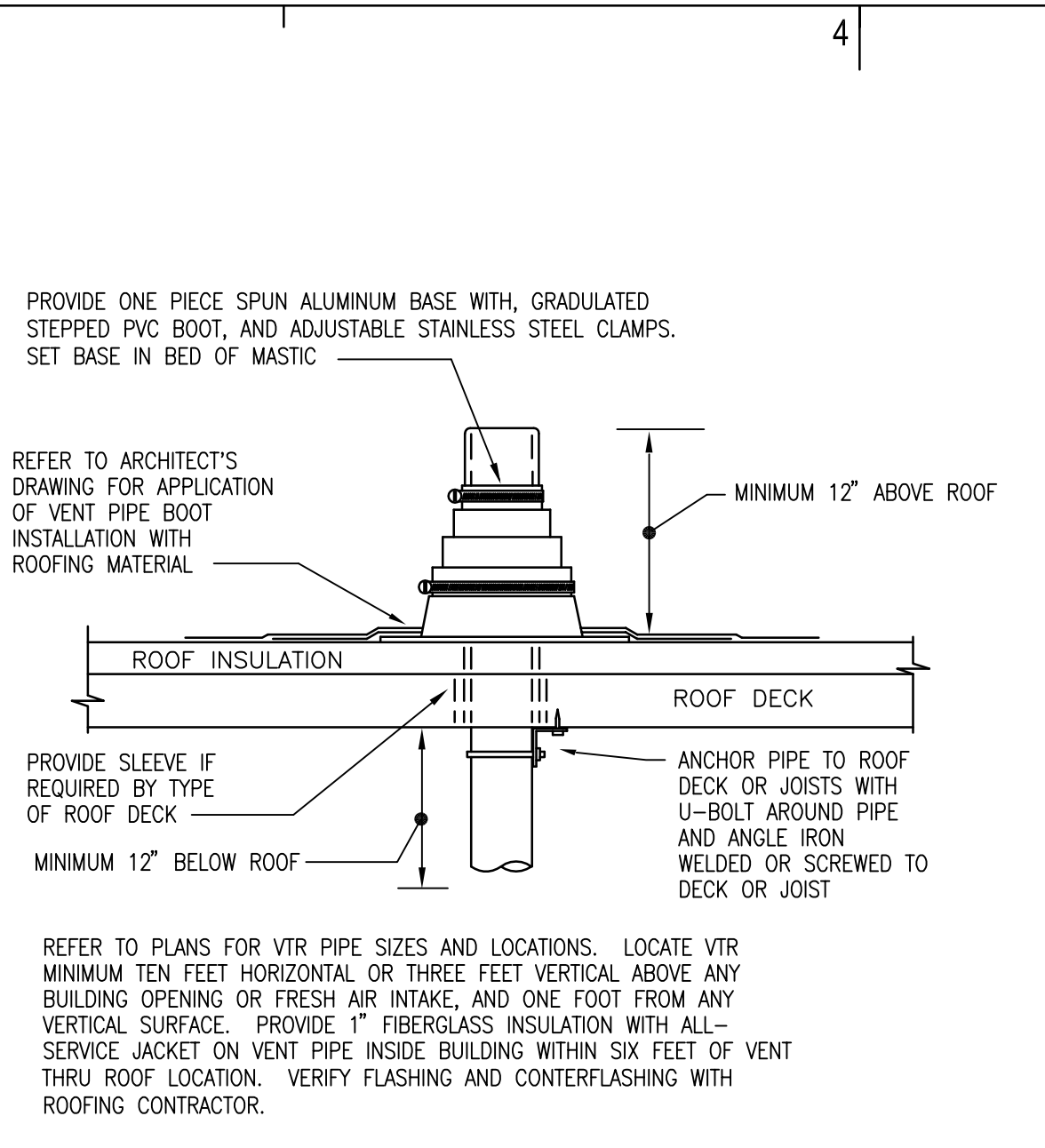
**9 WATER HEATER DETAIL**  
SCALE: NOT TO SCALE



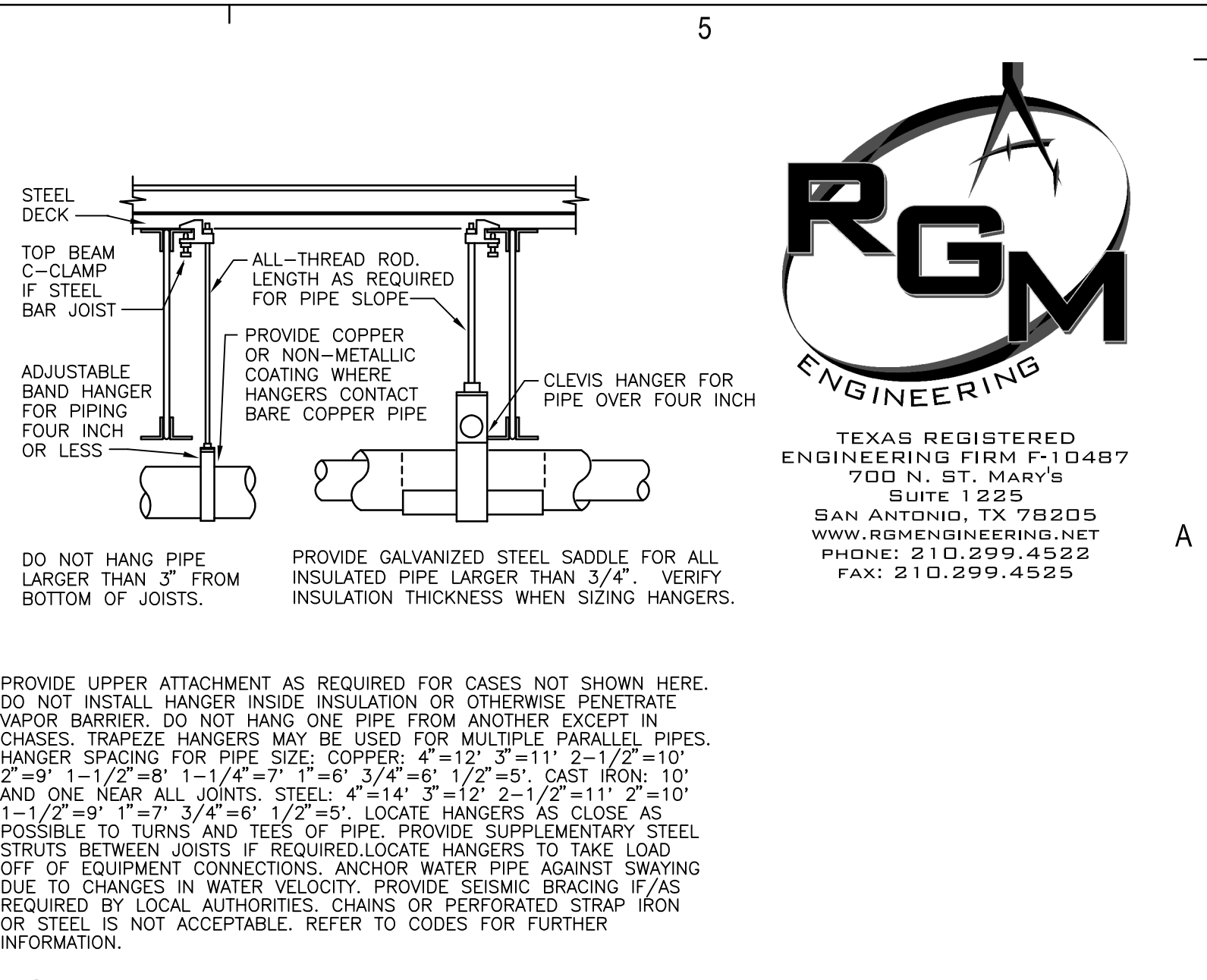
**2 TYPICAL WHEELCHAIR LAVATORY DETAIL**  
SCALE: NOT TO SCALE



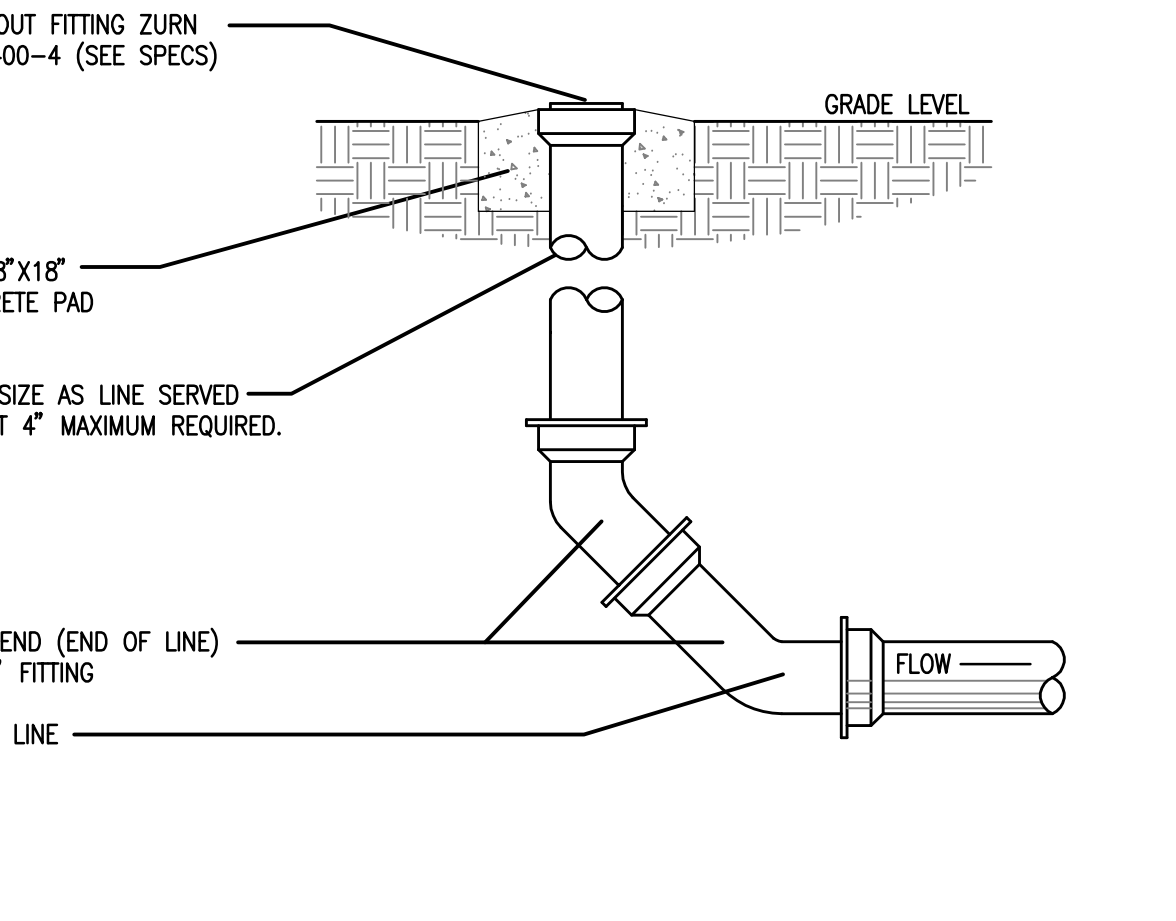
**6 TYPICAL CLEANOUT DETAIL**  
SCALE: NOT TO SCALE



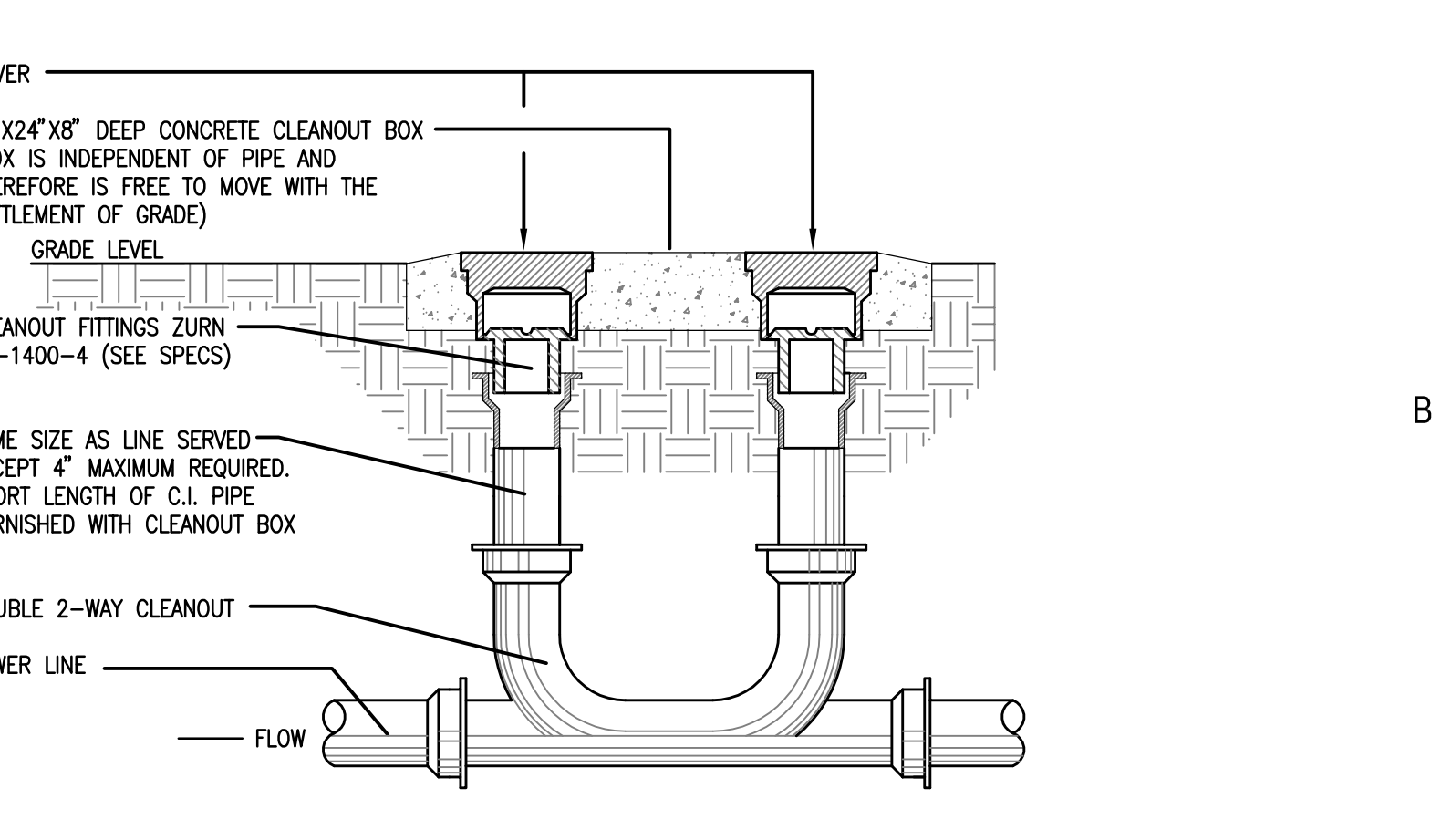
**3 VENT THRU ROOF DETAIL**  
SCALE: NOT TO SCALE



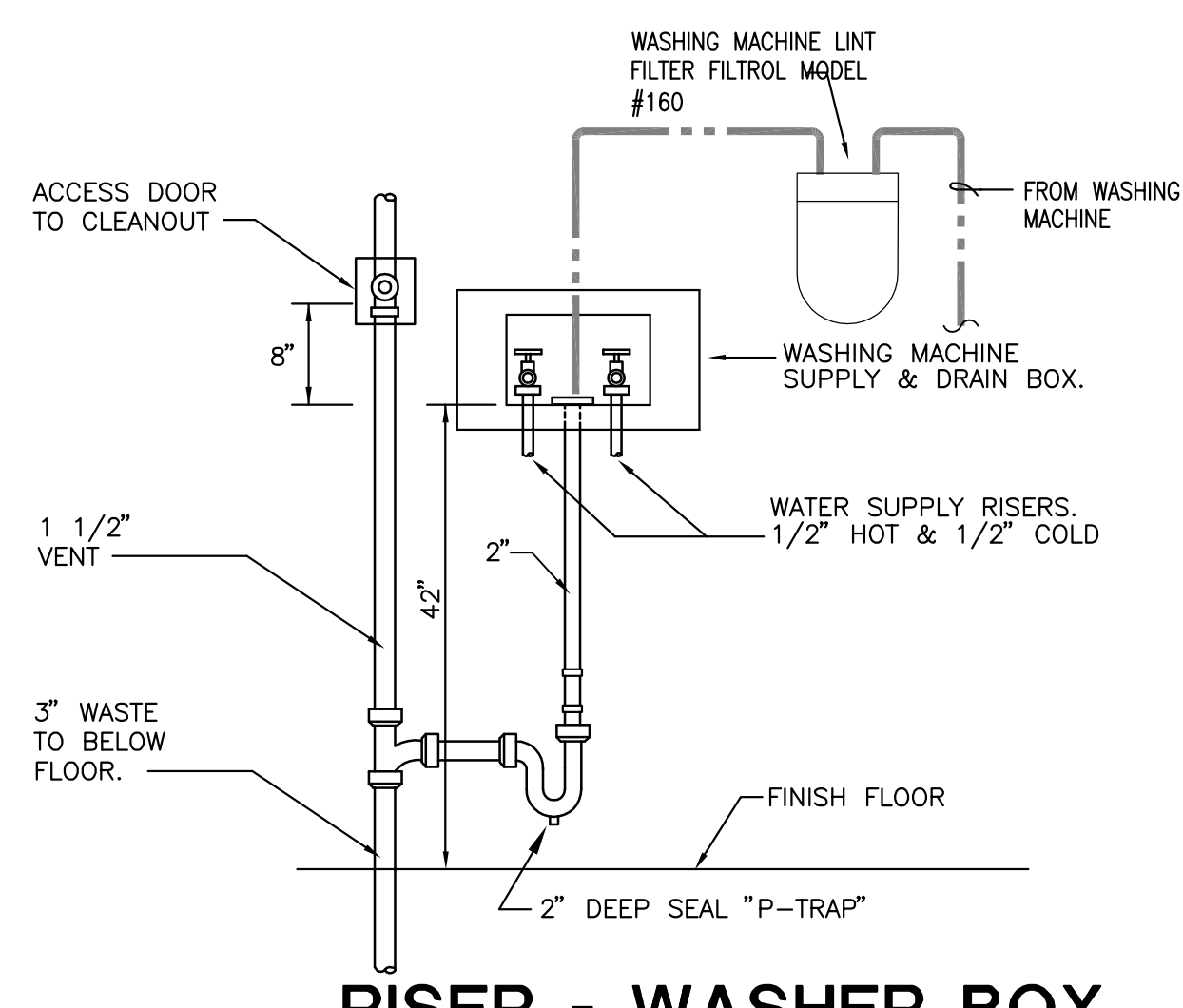
**4 PIPE HANGERS**  
SCALE: NOT TO SCALE



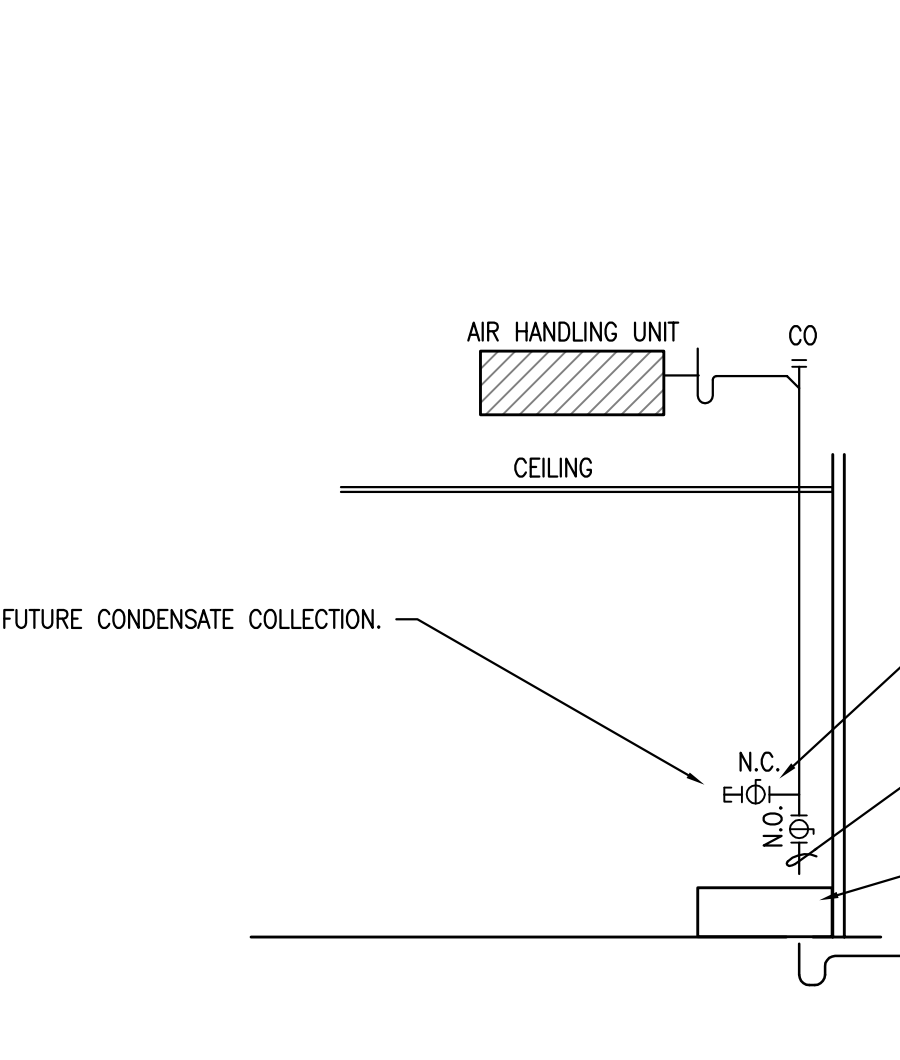
**7 YARD CLEANOUT DETAIL**  
NO SCALE



**8 DOUBLE YARD CLEANOUT DETAIL**  
NO SCALE



**10 RISER - WASHER BOX WITH AUXILIARY DRAIN**  
SCALE: NOT TO SCALE



**11 CONDENSATE DRAIN DETAIL**  
SCALE: NOT TO SCALE

ARCHITECT  
**DOUGLAS ARCHITECTS**  
1320 E. Houston St. Suite 102  
San Antonio, TX 78205  
T 210.226.5500  
F 210.226.5501  
www.douglasarchitects.net

OWNER  
**BROOKS CITY BASE**  
Contact: Jaime Lawhn  
3201 Sidney Brooks  
San Antonio, TX 78235  
T: 210.678.3357  
E: jaime.lawhn@brookscity-base.com

STRUCTURAL ENGINEER  
**LUNDY & FRANK ENGINEERING, INC.**  
Contact: Duncan McAda  
549 Hermer Rd.  
San Antonio, TX 78232  
T: 210.379.7900  
E: mcada@lundyfranke.com

Project No.: 1414  
Project Architect: Andrew Douglas, AIA  
Project Manager: Caleb Gains

M.E.P. ENGINEER  
**R.G.M. ENGINEERING**  
Contact: Roger Mendez  
700 N. St. Mary's, Suite 1225  
San Antonio, TX 78205  
T: 210.299.4522  
E: roger@rgmenengineering.net

SEAL  
THE SEAL APPEARING ON THIS DOCUMENT WAS AUTHORIZED BY  
ROGER G. MENDEZ, P.E., 93809  
ON 01/05/2016

DATE	ISSUANCE
1 October 19, 2015	50% Progress Set
2 December 04, 2015	90% Progress Set
3 December 11, 2015	100% CD Set
4 December 15, 2015	Addendum 1
5 December 16, 2015	Addendum 2
6 December 22, 2015	Addendum 3
7 January 05, 2016	Addendum 4

PROJECT  
**VETERINARY CLINIC AT BROOKS**

PROJECT STATUS  
**ADDENDUM 4**  
JANUARY 05, 2016

SHEET NAME  
**PLUMBING DETAILS**

SHEET NUMBER  
**P3.01**